

STEAMBREAKER[®]

powered by JIFFY[®] STEAMER

Creating a custom fit for footwear.

**HARNESS THE POWER OF STEAM
TO BREAK IN YOUR FOOTWEAR.**

WWW.STEAMBREAKER.COM



JIFFY STEAMER WOULD LIKE TO INTRODUCE ANOTHER INDUSTRY FIRST...THE STEAMBREAKER.

The SteamBreaker is an innovative new product that accelerates breaking in footwear, quickly creating a custom fit for your feet. Say goodbye to the pain of breaking in a new pair of footwear...let the power of steam do the work for you!

PRODUCTS



J-4000SBR SteamBreaker

- Large 1 gallon internal water reservoir provides 2 hours of continuous steam before refilling
- Quick 15-minute heat-up time to PREHEAT mode, allowing you to maintain the steamer's temperature until you need it
- Go from PREHEAT mode to full STEAM power in just 2 minutes
- Easily view water levels and sediment buildup at a glance with the built-in sight gauge
- Curved 20" aluminum pipe concentrates steam into the footwear
- Best in the industry 3-year warranty
- Manufactured in the U.S.A.

PRODUCT INFORMATION AND OPTIONS

ITEM # 2530

VOLTAGE 120 volts

WATTAGE 1,500 watts

STEAM TIME 2 hours per filling
(1 gallon of water)

CORD PLUG 3-prong NEMA 5-15
grounded plug

STEAM ATTACHMENT 20" angled pipe

STEAMER CARTON DIMENSIONS
20" x 12" x 13"

ASSEMBLED DIMENSIONS
20" x 11" x 29"

CARTON WEIGHT 22 pounds

ELECTRICAL CERTIFICATIONS UL, cUL



J-2000SBR SteamBreaker

- 3/4 gallon water reservoir provides 1.5 hours of continuous steam before refilling
- Water caddy is easily filled in a shallow basin sink
- Quick 1.5 minute heat-up time
- Curved 20-inch aluminum pipe concentrates steam into the footwear
- Best in the industry 3-year warranty
- Manufactured in the U.S.A.

PRODUCT INFORMATION AND OPTIONS

ITEM # 2535

VOLTAGE 120 volts

WATTAGE 1,300 watts

STEAM TIME 1.5 hours per filling
(3/4 gallon of water)

CORD PLUG 3-prong NEMA 5-15
grounded plug

STEAM ATTACHMENT 20" angled pipe

STEAMER CARTON DIMENSIONS
17.5" x 11.5" x 16"

ASSEMBLED DIMENSIONS
10" x 15" x 29"

CARTON WEIGHT 15 pounds

ELECTRICAL CERTIFICATIONS UL, cUL

STEAMBREAKER®

powered by JIFFY® STEAMER

Start using the SteamBreaker in four easy steps or view our video online at...

WWW.STEAMBREAKER.COM

HOW IT WORKS

*Steam is hot. Please consult the owner's manual for product safety instructions before operating.



STEP ONE

Fill with water. The J-2000SBR model includes a removable water tank for easy filling and the model J-4000SBR has an internal water tank. Turn on the power to the unit.



STEP TWO

Using the protective gloves (provided), place the boot over the SteamBreaker steam pipe. In less than 20 seconds, each piece of footwear is steamed to allow for a custom fit. Be sure not to over steam.



STEP THREE

The footwear will now become very relaxed and pliable.



STEP FOUR

It is important that the customer puts on the footwear and wears it for several hours so that as the leather cools, it will mold to the shape of the foot. You have just created a custom "steam fit" for your customer.

WHAT CUSTOMERS ARE SAYING

"Shoe Shack loves the new SteamBreaker by Jiffy Steamer as a way to loosen leather on any western boots, work boots and shoes. This is a great product that is well built and easy to use. Turn the SteamBreaker on, let it preheat and switch to steam; then put the boots or shoes over the steam pipe and it's done the job in approximately 20 seconds! It basically makes the break-in period go away. Any store or business that sells leather boots could use this product to lead to more sales and as an added value to the customer."

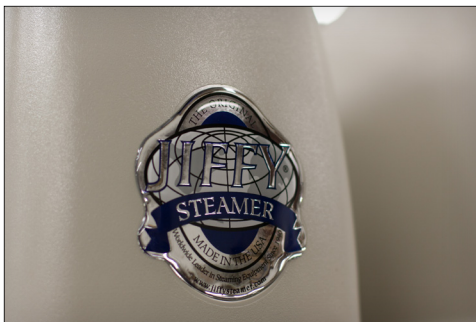
*Bryan Castleman, Shoe Shack
Martin and Union City, Tennessee
www.shoeshackonline.com*



P.O. Box 869
Union City, Tennessee 38281
United States of America

STEAMBREAKER®

powered by JIFFY® STEAMER



MADE IN THE USA SINCE 1940

JIFFY STEAMER TRACES ITS ROOTS BACK TO 1940
As the world's oldest and largest manufacturer of steaming equipment, we manufacture dozens of models with only the finest industrial components. Jiffy Steamers are used in a variety of applications in homes, businesses and industrial applications around the globe.



JIFFY STEAMER 3-YEAR LIMITED PRODUCT WARRANTY
The Jiffy Steamer is precision built, tested and inspected before leaving our factory located in Union City, Tennessee. It is guaranteed against defects in material or workmanship for three (3) years from date of purchase. If any part proves to be defective, this product will be repaired free of charge.

JIFFY® STEAMER COMPANY, LLC

SHIPPING ADDRESS: 4462 Ken-Tenn Highway, Union City, Tennessee 38261 • MAILING ADDRESS: P.O. Box 869, Union City, Tennessee 38281
TOLL-FREE PHONE: 1.800.525.4339 • PHONE: 1.731.885.6690 • FAX: 1.731.885.6692 • WWW.STEAMBREAKER.COM • WWW.JIFFYSTEAMER.COM