

# J-4000 Wiring Diagram

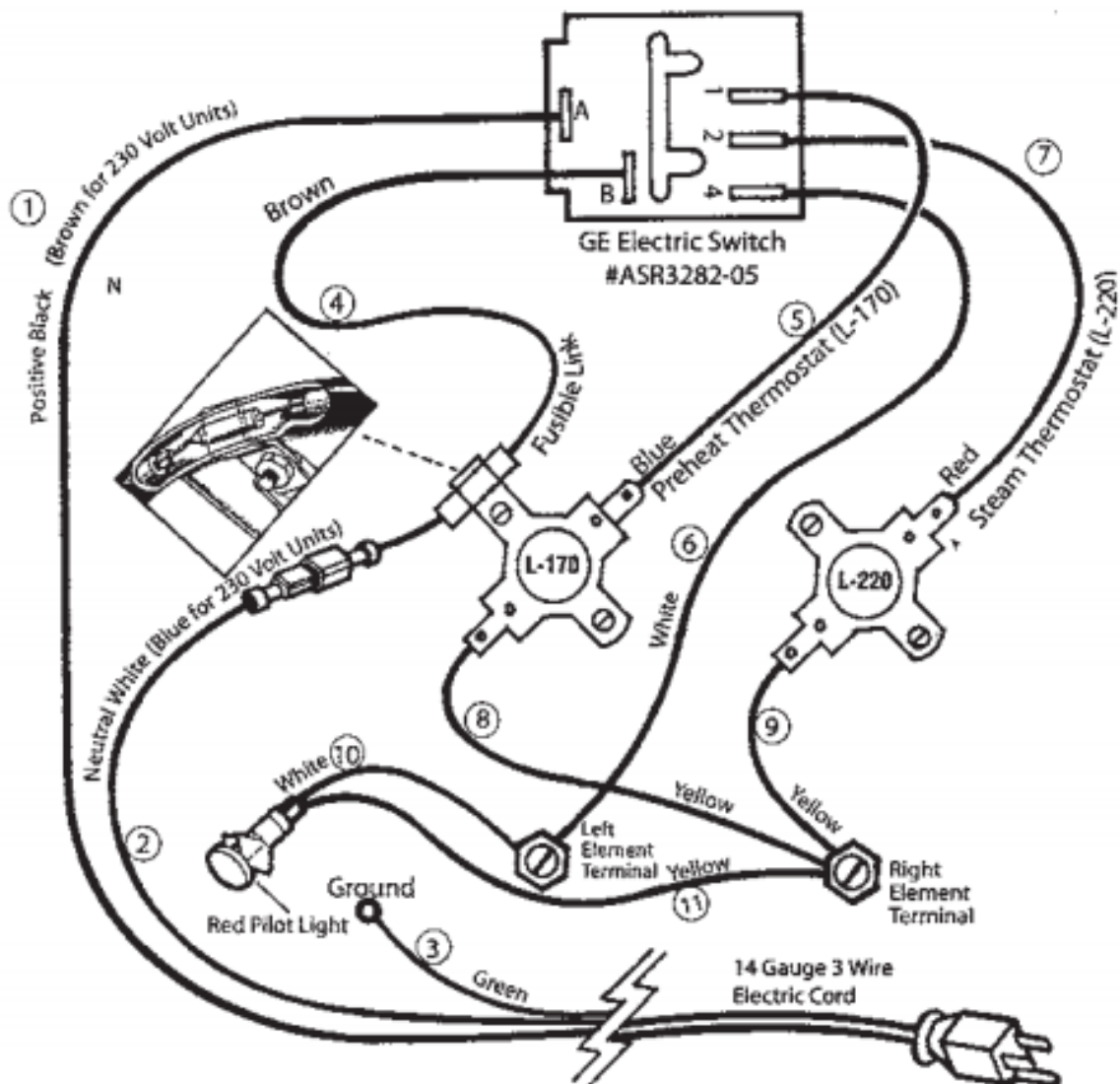


Worldwide Leader in Steaming  
Equipment Since 1940

Before attempting any repair on a Jiffy Steamer product, make sure that it is unplugged from the outlet. If you have any questions, please contact our repair department at 1.800.525.4339 between 7:30 AM – 4:00 PM Central Time.

**NOTE: The switch terminal number and the switch terminal letters are marked on the actual switch.**

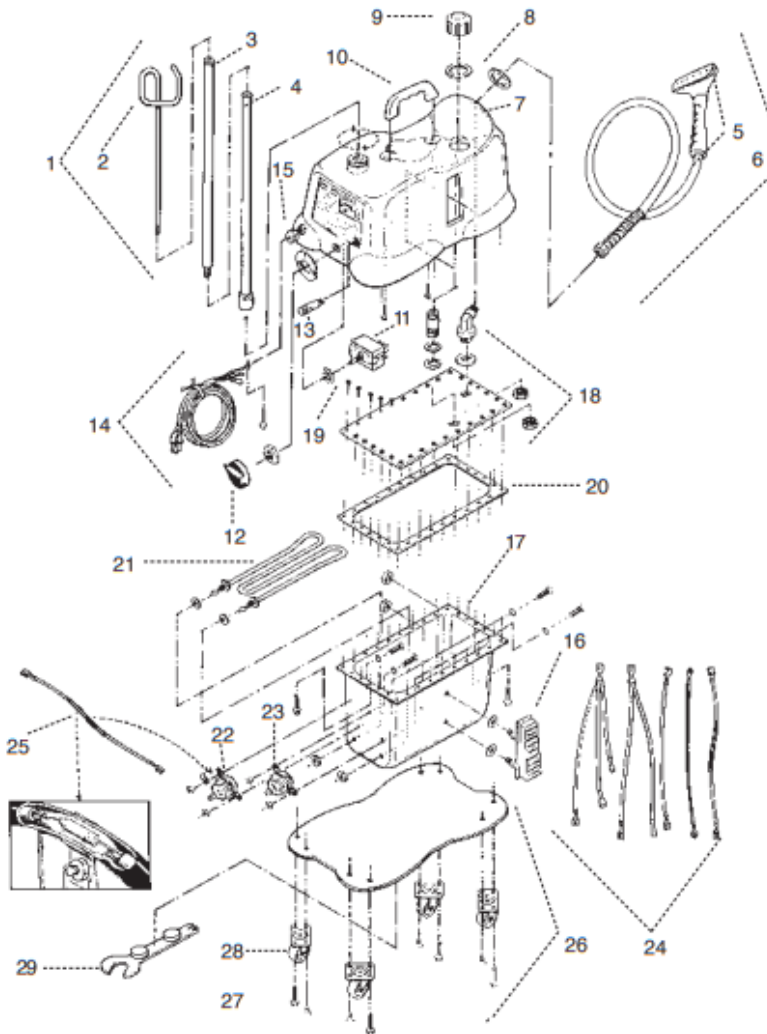
1. Positive black (1) (brown for 230 volt units) to A on switch.
2. Neutral white to (2) brown fuse wire (4) (blue for 230 volt units).
3. Green ground wire (3) to grounding mount on housing.
4. Brown fuse (4) wire to B on switch.
5. Blue wire (5) from top of preheat thermostat (L170) to #1 on switch.
6. White wire (6) from left side of element to #4 on switch.
7. Red wire (7) from top of steam thermostat (L-220) to #2 on switch.
8. Long yellow wire (8) from bottom of preheat thermostat to right side of element.
9. Short yellow wire (9) from right side of element to bottom of steam (L-220) thermostat.
10. White wire (10) from light to left side of element.
11. Medium length yellow wire (11) from light to right side of element.



# J-4000 Parts Diagram

**For models manufactured after March 2005.**

Should you ever need replacement parts for your Jiffy Steamer, you may purchase them separately. Use this convenient diagram and parts list to identify any part you may need. Please reference the Jiffy Steamer part number, model number and serial number when ordering.



Key #	Part #	Part Description	Price
1	1030	Rod Set and Nut Complete with Metal Studs	\$ 30.00
	0034	RodSet and Nut Complete for Drapery Steamers	\$ 34.00
2	0035	Hook Section of Rod Set	\$ 7.50
3	0036	Middle Section of Rod Set (with barrel stud and cap screw)	\$ 8.50
4	1033	Bottom Section of Rod Set (with Nut Attached)	\$ 15.50
	0037	Bottom Section of Rod Set (without Nut)	\$ 8.50
	0038	Additional Middle Section of Rod Set for Drapery Steamers	\$ 8.50
	0043	Metal Threaded Cap Screw for Rod Set	\$ 1.75
	0039	Metal Threaded Stud for Rod Sections	\$ 1.75
5	0253	Plastic Steam Head/Handle Replacement Kit	\$ 25.00
6	0251	Plastic Head/Handle Hose Attachment Complete	\$ 58.00
	0280	Hose Per Foot (Black in Color)	\$ 3.50
7	1301	J-4000 Die Cast Aluminum Housing	\$ 82.00
	0006	Hex Beauty Ring	\$ 1.00
8	0004	Round Beauty Ring	\$ 1.00
	0049	Water Fill Cap	\$ 7.50
9	0049P	Pressure Release Water Fill Cap	\$ 7.50
	0053	Funnel	\$ 4.25
10	0054	Housing Handle with Two Screws	\$ 8.25
11	0199	Rotary Power Switch and Knob	\$ 14.00
12	0201	Replacement Knob Only for Rotary Power Switch	\$ 1.75
13	1310	Red Neon Pilot Light (120VOLT)	\$ 5.50
	1311	Red Neon Pilot Light (230VOLT)	\$ 5.50
14	0133	Cord Set (1 4/3 gauge) with Strain Relief	\$ 11.00
15	0133B	Cord Strain Relief	\$ 1.75
16	0050	Water Level Sight Gauge with Nuts and Washers	\$ 38.00
	1353	Stainless Steel Boiler Tank Kit Complete (120Volt/1500Watts)	\$180.00
	1354	Stainless Steel Boiler Tank Kit Complete (230Volt/1500Watts)	\$180.00
	0074A	Stainless Steel Boiler Tank with Sight Gauge (0-4)	\$ 90.00
17	0074C	Stainless Steel Boiler Tank Only	\$ 54.00
18	1370	Stainless Steel Boiler Tank Lid with 2 Brass Fittings and 2 Beauty Rings	\$ 32.00
19	0071	Boiler Tank Screw Set (Set of 30)	\$ 7.00
	0061	Boiler Tank Silicone Sealer (2.8 Fluid Ounces)	\$ 5.50
	0062	Boiler Tank Silicone Sealer (10.1 Fluid Ounces)	\$ 10.00
20	0075	Boiler Tank Gasket	\$ 10.00
21	0063	"W" Bend Heating Element (120 Volt, 1500 Watt) with Hardware	\$ 32.00
	0064	"W" Bend Heating Element (230 Volt, 1500 Watt) with Hardware	\$ 32.00
22	0203	Preheat Thermostat (L-170)	\$ 10.00
23	0204	Steam Thermostat (L-220)	\$ 10.00
24	0155	Internal Wire Set (Set of 5 Wires) for "W" Bend Element	\$ 10.00
25	0158	Fusible Link Wire with Insulated Cap and Clamp	\$ 3.50
26	1320	Bottom Plate with Four Casters	\$ 21.00
27	0017	Bottom Plate Screws (Set of 4)	\$ 1.00
28	0018	Bottom Plate Casters (Set of 4)	\$ 7.50
<b>Accessories</b>			
	1026	1" Kit - 5.5' Hose with Four Attachments	\$105.00
	1027	1" Kit - 7.5' Hose with Four Attachments	\$112.00
29	1050	Jiffy Steamer Assembly Wrench	\$ 5.00
	0259	AutoHose Attachment with Dual Metal Heads	\$ 95.00
	0257	Carpet Hose Attachment with 12" wide Metal Head	\$ 87.00
	0252	7.5" Drapery Hose Attachment with Plastic Steam Head	\$ 65.00
	0255	7.5" Drapery Hose Attachment with Metal Steam Head	\$ 88.00
	0254	Metal Head/Wood Handle Hose Attachment Complete	\$ 81.00
	0256	Metal Head / Wood Handle Only	\$ 43.50
	0269	Replacement Wooden Handle (for Metal Steam Heads)	\$ 8.25
	0262	Wig Hose Attachment	\$ 68.00
	0274	Brass Hat Nozzle Attachment	\$ 15.00
	1062	Steam Cleaning "B" Brush Hose Attachment	\$ 70.00
	1063	Brush Only for the "B" Hose Attachment	\$ 10.00
	0053	Funnel	\$ 18.00
			\$ 4.25

## Jiffy Steamer Company, LLC

 [jiffysteamer.com](http://jiffysteamer.com)      Manufacturing Plant  
 [info@jiffysteamer.com](mailto:info@jiffysteamer.com)      4462 Ken-Tenn Highway  
 1.731.885.6690      Union City, Tennessee 38261  
 1.731.885.6692      United States of America